

Technology Backgrounder

[DoseWise Solutions](#)

At Philips, we understand the importance of protecting patients and clinical staff from radiation exposure. We strive to continually innovate radiation protection solutions that will help our customers provide safer patient care.

While the risk of radiation exposure through imaging scans is thought to be low, and the diagnostic rewards generally outweigh those risks, Philips is committed to reducing radiation exposure through improvements in technology, user training and education.

DoseWise provides a framework for developing a comprehensive radiation safety program that integrates and strengthens the management of staff and patient dose and the connections between them. These tools will help your facility reach the objective of ALARA imaging.

[DoseWise Portal](#)

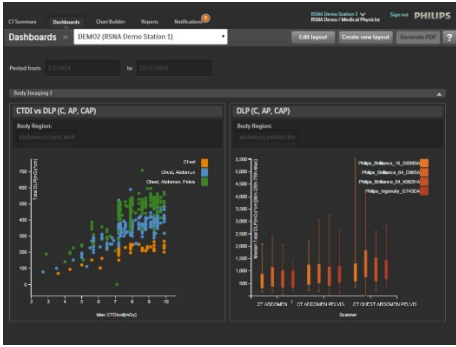
At RSNA 2015, Philips is introducing the DoseWise Portal 2.0, a comprehensive radiation dose management solution aimed at managing radiation exposure risk to patients and their caregivers. The 2.0 version of DoseWise Portal introduces 3 new features: Peak Skin Dose, fluoroscopy exam summary screen and enhanced DoseAware Xtend visualization.

The DoseWise portal enables health care providers to proactively record, analyze and monitor imaging radiation dose for patients and clinicians across multiple diagnostic settings. The DoseWise Portal is a vendor-agnostic software tool that will collect patient exposure and combine with staff exposure using DoseAware Xtend¹ and is part of the DoseWise portfolio.

Key Benefits/Features:

- Aids in regulatory compliance efforts for patient radiation dose
 - Radiation dose can be added to the patient record
 - Radiation dose can be compared with other patients and institutional thresholds
 - Provides valuable patient history to supplement a clinician's decision
- Enhance data informed decision-making through advanced analytics
 - Identifying potential areas for improvement through greater oversight of dose data
 - Contributes to a stronger radiology quality system document
- Provide integrated real-time dose monitoring/measurement for staff using DoseAware Xtend
 - Immediate feedback on scatter dose within the procedure
 - Retrospective analysis gives insight into staff and patient dose events

¹ DoseAware Xtend is not a legal dosimeter and does not replace a TLD or film badge



[DoseAware Family](#)

DoseAware

The DoseAware personal dose monitoring system measures and displays an individual's exposure to radiation in real time. It gives staff immediate feedback on their level of scattered X-ray exposure and how their behavior affects it. DoseAware helps staff track when and where dose was acquired, so they can take appropriate action during a procedure or work shift, if required.



DoseAware Xtend

DoseAware Xtend makes real-time dose measurement even more precise and useful in a single display. It gives immediate feedback on scattered X-ray dose per procedure to help staff continually learn and improve their behavior. DoseAware Xtend also reminds staff to better protect themselves at certain moments during a procedure, and provides other useful information to help them easily identify trends in their exposure levels. The DoseAware Xtend screen is integrated with the Allura FlexVision XL monitor, so no separate dose screen is required. This data can be integrated with patient radiation dose data within the DoseWise Portal.



