



Views and solutions

Philips Lighting – Autumn 2011

PHILIPS

sense and simplicity

For more information:
www.philips.co.uk/lighting

Data subject to change
Printer: Print Competence Company - 11.2011
Graphical production: Adnovate



See what light can do

As the world leader in lighting we are continuing to expand the depth and scope of our range of lighting solutions. In Views and Solutions, a twice-yearly publication, we present to you new and exciting product innovations for every application in a simple and accessible way. At the same time, technical specifications of each new lighting solution can be found in our online catalogue. We invite you to have a look on the pages that follow to see how we are applying our expertise to inspire you.

Are you using an iPad to get inspired and find information on Lighting solutions and products? Then you should definitely try our Lighting hub iPad app which can be downloaded from the iTunes store. The Lighting hub app contains inspirational projects and also offers you the complete professional lighting portfolio in one go.

www.philips.co.uk/lighting





A man with short brown hair, wearing a grey sweater, is smiling and looking down. He is in the foreground on the left side of the frame. The background is a blurred city street at night, with warm yellow and orange lights from street lamps and buildings, creating a bokeh effect. The overall atmosphere is warm and inviting.

Liveable Cities

Cities want to create an identity, branding themselves as unique, beautiful and secure places. High-quality white light can transform the night scene, enhancing urban architecture and creating an inviting ambience that encourages more people to spend time there. It also prevents accidents and makes our roads safer. Philips can help you make the switch to LED easier than you could possibly imagine, enhancing life in the city with the power of light.



The Philips Lighting difference

We believe in creating innovative outdoor solutions that beautify and inspire. At the same time we also respect the delicate balance that exists between the identity of a city and the needs of its residents. Our expertise and unrivalled knowledge has enabled us to develop LED lighting solutions that are practical and beautiful, but also energy-efficient and sustainable. Solutions that make cities more livable while still respecting the planet.



Feel proud of your city

At the heart of a city lie its landmarks. Lighting buildings and monuments puts them centre stage, creating markers for orientation and celebrating the city's unique identity. From single buildings to entire districts, lighting adds the drama and accents that bring the cityscape to life at night.



Feel at home in your city

Lighting has the power to enhance life in the city. No longer simply functional, it has become a creative art, illuminating attractive and inviting atmospheres that encourage night-time socialising and enrich the city's night life. During the day luminaires also play an architectural role, complementing the street scene with style and subtle design.

Environmentally sound solutions

Acting responsibly towards the environment means securing the optimum balance between energy savings (and CO₂ reduction) versus costs during the lifetime of your lighting installation. The LED GREEN Program enables you to decide already now for future energy savings, giving you peace of mind when switching to newest LED technology, and we also offer a growing range of carbon-neutral luminaires where the CO₂ emissions during production have been offset. In the current context of awareness of ecological issues and our footprint on the planet, it is important to emphasise the costs of public lighting on our energy bill.



Tobias Asserlaan - Tilburg, the Netherlands

Creating identities

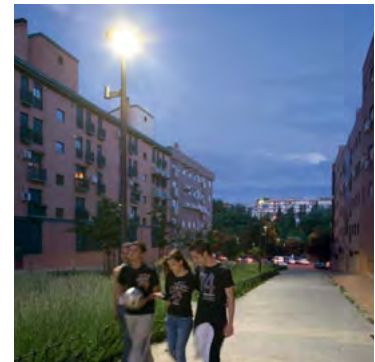
Cities are looking for solutions to their lighting requirements that go beyond just providing light points; they want inspirational ideas that will contribute to the identity of the city and create a real sense of pride. No two cities are alike, so our luminaire ranges features several mast and bracket designs that provide an elegant solution for every style and period of architecture, reflecting the local surrounding and making everyone feel more at home in the city. We are also co-developing dedicated luminaires with municipalities, well-known architects and lighting designers to create an even more unique identity for your city.



A44 highway - Wassenaar, the Netherlands

Design freedom

Every lighting scheme presents its own unique set of challenges. A myriad of different techniques, equipment and technologies are available to turn your creative ideas into reality. Every city aims for its own unique identity, and with LED technology there's more and more room for design and individualisation. Take a glimpse at the design possibilities you have, and we are happy to support and help to bring your creative ideas to life.



Mostoles, Spain

Enriching urban life

Lighting has the power to bring the city to life, especially at night. Urban lighting creates an inviting ambience that makes people feel safe and secure, on foot, on bicycles, in cars and on public transport. With LED lighting you can turn the urban environment into an exciting, captivating space where people want to spend more time at night. The landmarks, buildings and monuments that lie at the heart of a city are the essence of its unique personality and identity. The right lighting can preserve that at night, showcasing structures and materials and transforming the city into an alluring destination. Somewhere that's a pleasure to spend time after dark.



Bern, Switzerland

New innovations Autumn 2011

Outdoor



StreetSaver

12

Hospitality



MASTER LEDspot
DimTone

24

Retail



MASTERColour
CDM Elite

40

Office



Celino, Arano and
SmartForm LED

48

Industry



GentleSpace

56



LEDGINE 2.0 14



Starsense 16



MASTER SON (-T) APIA Plus 18



MASTER CityWhite & MASTER CosmoWhite 20



MASTER LEDbulb Designer 26



MASTER LEDspot Perfect Fit 28



MASTER LEDspot MR16 30



MASTER LEDspot AR111 32



MASTER LEDspot PAR38 Outdoor 34



ColorFuse & iW Fuse Powercore 36



StoreFlux 42



Maxos LED Recessed 44



SmartForm LED modular 50



CoreView panel 52

All dimensions mentioned in the drawings of this brochure are in millimeters



Outdoor





StreetSaver – saves energy and more

Under new regulations, all mercury-based lamps are prohibited from 2015 onwards. This means that all luminaires using these lamps need to be replaced as well. However, the installed base of these luminaires is huge, and the municipalities do not have the budget for such large-scale replacement, especially in this period of economic austerity. At the same time, the municipal authorities are facing tremendous pressure to save energy and to reduce light pollution of the night sky (many mercury installations have a transparent bowl, sending light everywhere).

StreetSaver is an affordable, high-quality solution that enables the municipalities to address all these issues at once by changing their mercury-based luminaires to a LED system – for only limited investment.

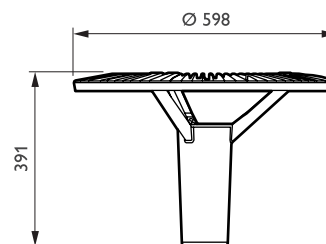
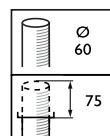
www.philips.co.uk/lighting

StreetSaver

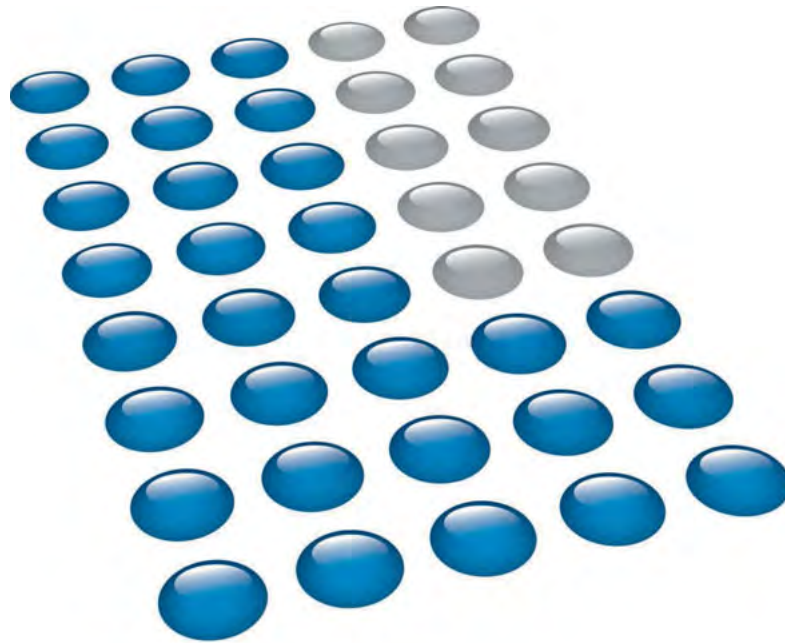
Type	BPP007
Light source	Integral LED-module
Power	60 W
Luminous flux	1906 lm, warm white 2740 lm, neutral white
Correlated Colour Temperature	3000 or 4000 K
Colour Rendering Index	>80, 3000 K >70, 4000 K
Maintenance of lumen output - L70	50,000 hours at 35°C
Operating temperature range	- 20°C < T _a < 35°C
Driver	Built-in (self ballasted LED-module)
Optic	Symmetrical wide beam
Optical cover	Cover flat
Material	Housing: aluminium Optical cover: polycarbonate
Color	Ultra-dark grey
Installation	Post top 60 mm pole fixation Fixation with 2 M10x25 screws Pre-wired with 6 m cable Recommended mounting height: 4 m Standard tilt angle post top: 0° Adjustable tilt angle: not available Adjustable light distribution: not available Max SCx: 0,08 m ²



StreetSaver



BPP007



LEDGINE 2.0 is here!

LEDGINE's promise of future-proof solutions is becoming a reality. Reflecting our continuous improvement drive, LEDGINE 2.0 offers around 30% higher performance than the previous version. Moreover, by increasing the luminous flux of each individual luminaire and offering new optics, this version is suitable for a wider range of applications. The positive feedback we received for LEDGINE 1.0's performance leads us to believe that this second version will be an even greater success.

LEDGINE 2.0 will be available in the following luminaire families:
MileWide LED, CitySpirit LED, CitySoul LED, SpeedStar, Iridium2 LED,
OptiFlood LED, Mini300 Stealth LED, Tunlite LED.

www.philips.co.uk/lighting



MileWide



CitySpirit



CitySoul



SpeedStar



Iridium²



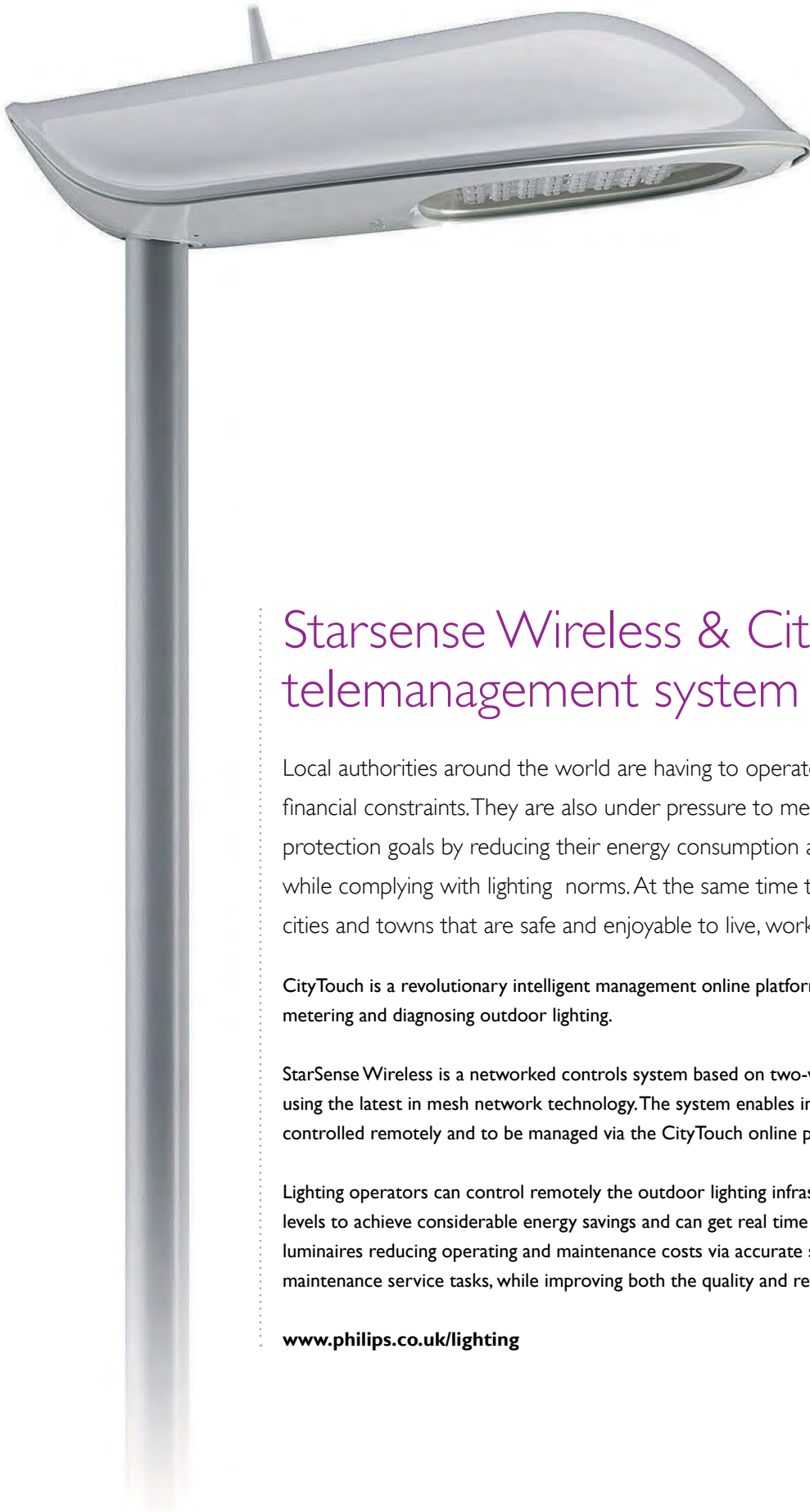
OptiFlood



Mini300 Stealth



Tunlite



Starsense Wireless & CityTouch telemangement system

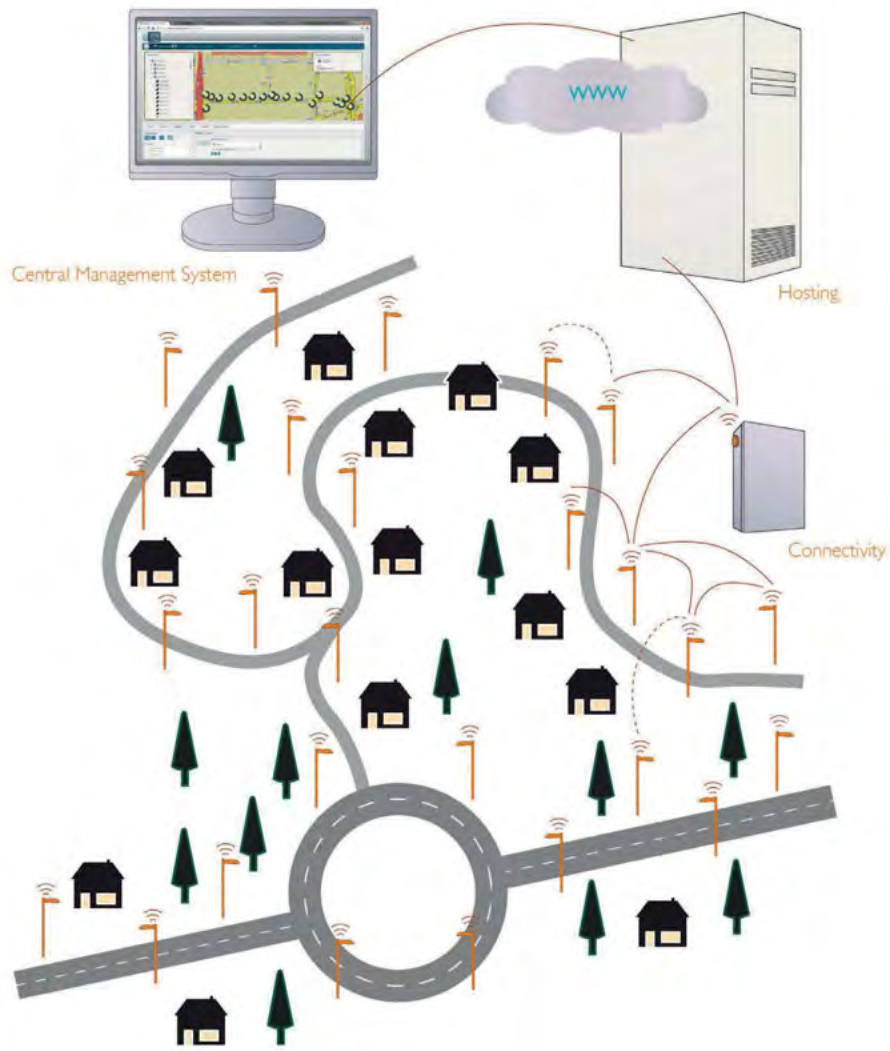
Local authorities around the world are having to operate under tremendous financial constraints. They are also under pressure to meet environmental protection goals by reducing their energy consumption and carbon footprint while complying with lighting norms. At the same time they need to create cities and towns that are safe and enjoyable to live, work and do business in.

CityTouch is a revolutionary intelligent management online platform for monitoring, controlling, metering and diagnosing outdoor lighting.

StarSense Wireless is a networked controls system based on two-way wireless communication using the latest in mesh network technology. The system enables individual light points to be controlled remotely and to be managed via the CityTouch online platform.

Lighting operators can control remotely the outdoor lighting infrastructure setting dimming levels to achieve considerable energy savings and can get real time feedback from the luminaires reducing operating and maintenance costs via accurate scheduling of on site maintenance service tasks, while improving both the quality and reliability of outdoor lighting.

www.philips.co.uk/lighting





MASTER SON(-T) APIA Plus Xtra & Hg Free – new

MASTER SON(-T) APIA Plus Xtra and MASTER SON(-T) APIA Plus Hg Free are dimmable high pressure sodium lamps. Their ceramic discharge tube features the new Active Philips Integrated Antenna (APIA) technology, resulting in prolonged reliable life up to 6 years. The innovative high efficacy “Plus” concept translates into high light output and improved lumen maintenance.

The MASTER SON(-T) APIA Plus Hg Free lamp also contains zero mercury, making it the most environmentally friendly solution in its application area.

The MASTER SON(-T) APIA Plus lamps’ robust construction, with minimal welding points, is highly vibration and shock resistant, further reducing early failures and extending lamp life – ideal for the outdoor market. Both lamps are highly cost effective, enabling savings on both initial and running costs.

www.philips.co.uk/lighting

MASTER SON(-T) APIA Plus Xtra

Family	MASTER SON-T APIA Plus Xtra	MASTER SON APIA Plus Xtra
Types (wattage)	70/100/150/250/400W	70/100/150/250/400W
Light output (lumens)	6600/10700/18000/33300/56000	5600/10000/17500/31300/55400
Luminous efficacy (lumens/watt)	90 (70W) - 140 lm/W	90 (70W) - 135 lm/W
Light colour (Tc)	1950	1950
Colour Rendering Index (Ra)	up to 25	up to 25
Lumen maintenance (24.000h)	90	85-95
Operating position	Any	Any
Lifetime (5% failures)	24.000	24.000
Lamp cap	E27 (70W) and E40 (100/150/250/400W)	E27 (70W) and E40 (100/150/250/400W)

MASTER SON(-T) APIA Plus Hg Free

Family	MASTER SON-T APIA Plus Hg Free	MASTER SON APIA Plus Hg Free
Types (wattage)	70/100/150/250/400W	150/250/400W
Light output (lumens)	6300/10000/17100/32200/56000	15800/29700/53600
Luminous efficacy (lumens/watt)	90 (50W) - 140 lm/W	105-135 lm/W
Light colour (Tc)	2100	2100
Colour Rendering Index (Ra)	up to 25	up to 25
Lumen maintenance (20.000h)	90	90
Operating position	Any	Any
Lifetime (5% failures)	20.000	20.000
Lamp cap	E27 (70W) and E40 (100/150/250/400W)	E40

For best light quality, longest lifetime and easy control of light we recommend to use the lamp in combination with the DynaVision DALI Xtreme gears. The driver is a best in class production, has a lifetime of 80.000 hours, contains lightning protection and keeps the light functioning at extreme temperatures.



DynaVision DALI Xtreme



MASTER CityWhite CDO Plus & MASTER CosmoWhite CPO Xtra – white range upgrade

Many city residents have stated that upgrading urban lighting to white light makes them feel better and safer. With the advent of lamp types such as MASTER CityWhite and MASTER CosmoWhite, with their attractive white light, such upgrades have become a key driver of urban well-being.

The MASTER CityWhite CDO and MASTER CosmoWhite CPO families both offer highly efficient white light. MASTER CityWhite is mainly intended for relamping/uplamping of existing SON installations to white light, while MASTER CosmoWhite is designed for new installations offering the most efficient long lasting white light with the lowest total cost of ownership. They can be used in city centres, shopping centres and pedestrian areas, as well as in residential areas for road lighting and floodlighting.

With the addition of the Plus version the MASTER CityWhite range is now complete. And the MASTER CosmoWhite range has also been improved, with a substantial extension of reliable life to six year service lifetime and the addition of a neutral white (4000 K) solution.

www.philips.co.uk/lighting

White light solution

Family	CDO TT Plus	CDO ET Plus
Types (wattage)	70/100/150/250W	70/100/150W
Light output (lumens)	7500/10700/16500/28300	7230/9400/15100
Luminous efficacy (lumens/watt)	105-110 lm/W	100 lm/W
Light colour (Tc)	2800	2800
Colour Rendering Index (R _a)	>80-90	>80-90
Lumen maintenance (8000h)	>80	>80
Operating position	Any	Any
Lifetime (10% failures)	8-12.000	8-12.000
Lamp cap	E27 (50/70W) and E40 (100/150/250W)	E27 (70W) and E40 (100/150W)

Cosmo Range extension

Family	CPO Xtra	CPO 4000 K
Types (wattage)	45/60	60/90/140
Light output (lumens)	4725/6800	7020/10350/16100
Luminous efficacy (lumens/watt)	105 (45W) - 115 lm/W	115 lm/W
Light colour (Tc)	2750	4000
Colour Rendering Index (R _a)	70	80
Lumen maintenance (24.000h)	80-90%	80-90%
Operating position	Horizontal advised	Any
Lifetime (10% failures)	20-24.000	12.000
Lamp cap	PGZ12	PGZ12

For best light quality, longest lifetime and easy control of light we recommend to use the lamp in combination with the DynaVision DALI Xtreme gears. The driver is a best in class production, has a lifetime of 80.000 hours, contains lightning protection and keeps the light functioning at extreme temperatures.



DynaVision DALI Xtreme



Hospitality



MASTER LEDspot DimTone – Energy efficiency meets ambiance

MASTER LEDspot DimTone delivers the warm, defined beam and the shift to warmer colour during dimming that is provided by halogen and GLS, while offering the energy savings, minimised maintenance costs and extended lifetime of LED lamps. Enabling maximum warmth and ambiance at lower dimming levels, it is ideal for hospitality applications requiring heightened customer comfort, such as restaurants, bars, washrooms and lobbies.

The DimTone feature means light colour shifts from regular warm white at maximum light output to warmer white at lowest light under full dimming, same as halogen and GLS. Further efficiency and energy savings are offered under such dimmed conditions. These LED spots fit most existing fixtures with a GU10 socket, and the innovative driver design ensures compatibility with a broad range of dimmer types.

www.philips.co.uk/lighting

MASTER LEDspot DimTone

Type	MASTER LEDspot MV DimTone 7-50W GU10 25D
Wattage	7W (50W halogen replacement)
Light colour	Warm white (2700 K)
Colour Rendering Index	>80Ra
Beam angle	25D
Lumen output	270 lm
Average lifetime	40.000 hrs
Dimmable	DimTone (dims from 2700 K to 2200 K)





MASTER LEDbulb Designer – Energy efficiency meets design

MASTER LEDbulb Designer combines warm, incandescent-like light with customisable MASTER LEDlamp covers to offer design freedom in a simple retrofit LED bulb like never before. Ideal for open fixtures where the bulb is fully visible, it offers the excellent light performance, dimming and energy savings of MASTER LEDbulbs along with a uniquely customisable design. It is particularly suited to the hospitality and retail industry, where aesthetic design is especially important.

The elegant MASTER LEDlamp covers can be individually selected and installed by the user to match the surrounding décor, also as it changes over the extended lifetime of the lamp. The innovative lamp design ensures excellent light quality, and the broadly compatible dimmable driver helps create the desired ambience while further improving efficiency

www.philips.co.uk/lighting

MASTER LEDbulb Designer

Type	MASTER LEDbulb E27 7-40W 2700 K Designer MASTER LEDbulb B22 7-40W 2700 K Designer Designer Bulb lamp cover Convex shape Designer Bulb lamp cover Concave shape
Wattage	7 W (40 W halogen replacement)
Light colour	Warm white (2700 K)
Colour Rendering Index	>80Ra
Lumen output	470 lm
Average lifetime	25.000 hrs
Dimmable	Yes



Convex shape



Concave shape



MASTER LEDspot Perfect Fit – the perfect fit replacement for mains voltage halogen spots

Delivering a warm, halogen-like accent beam, MASTER LEDspot GU10 is a perfect fit for spot lighting (track, corridors, lift lobbies, display cases and cabinets) in the hospitality industry. It is particularly suited to public areas such as lobbies, corridors, stairwells, where the light is on 24/7.

MASTER LEDspot delivers huge energy savings and minimises maintenance cost without any compromise on brightness, enabling hospitality owners to achieve a return on their investment within one year. These LED lamps are designed as a retrofit replacement and fit with all existing fixtures with a GU10 holder. Philips has now introduced its first mains voltage, full retrofit GU10 50W replacement.

www.philips.co.uk/lighting

MASTER LEDspot MV5,5-50W GU10

Type	MASTER LEDspotMV 5.5-50W GU10 2700K 25D MASTER LEDspotMV 5.5-50W GU10 2700K 40D MASTER LEDspotMV 5.5-50W GU10 3000K 25D MASTER LEDspotMV 5.5-50W GU10 3000K 40D
Wattage	5.5 W (50 W halogen replacement)
Light colour	Warm white (2700 & 3000 K)
Colour Rendering Index	>80Ra
Beam angle	25D 40D
Lumen output	270 lm
Average lifetime	40.000 hrs
Dimmable	No



MASTER LEDspot MR16 – elegance meets efficiency

Delivering a warm, halogen like accent beam, MASTER LEDspot MR16 lamp is an ideal retrofit solution for low voltage spot and general lighting applications in the hospitality industry. It is particularly suited to public areas such as receptions, lobbies, corridors, stairwells and washrooms, where the light is on all the time.

The robustly designed MASTER LEDspot MR16 range now has been extended with the 5.5W replacing a 35 W MR16 low voltage spot. There is no UV or IR in the beam, making it suitable for illuminating heat-sensitive objects (food, organic materials, paintings, etc.).

www.philips.co.uk/lighting

MASTER LEDspot LV 5.5-35W MR16

Type	MASTER LEDspotLV 5.5-35W 2700K MR16 36D MASTER LEDspotLV 5.5-35W 3000K MR16 36D
Wattage	5,5 W (35 W halogen replacement)
Light colour	Warm white (2700 & 3000 K)
Colour Rendering Index	>80Ra
Beam angle	36D
Lumen output	290 lm 300 lm
Average lifetime	25.000 hrs
Dimmable	No





MASTER LEDspot AR111 – Energy meets efficiency

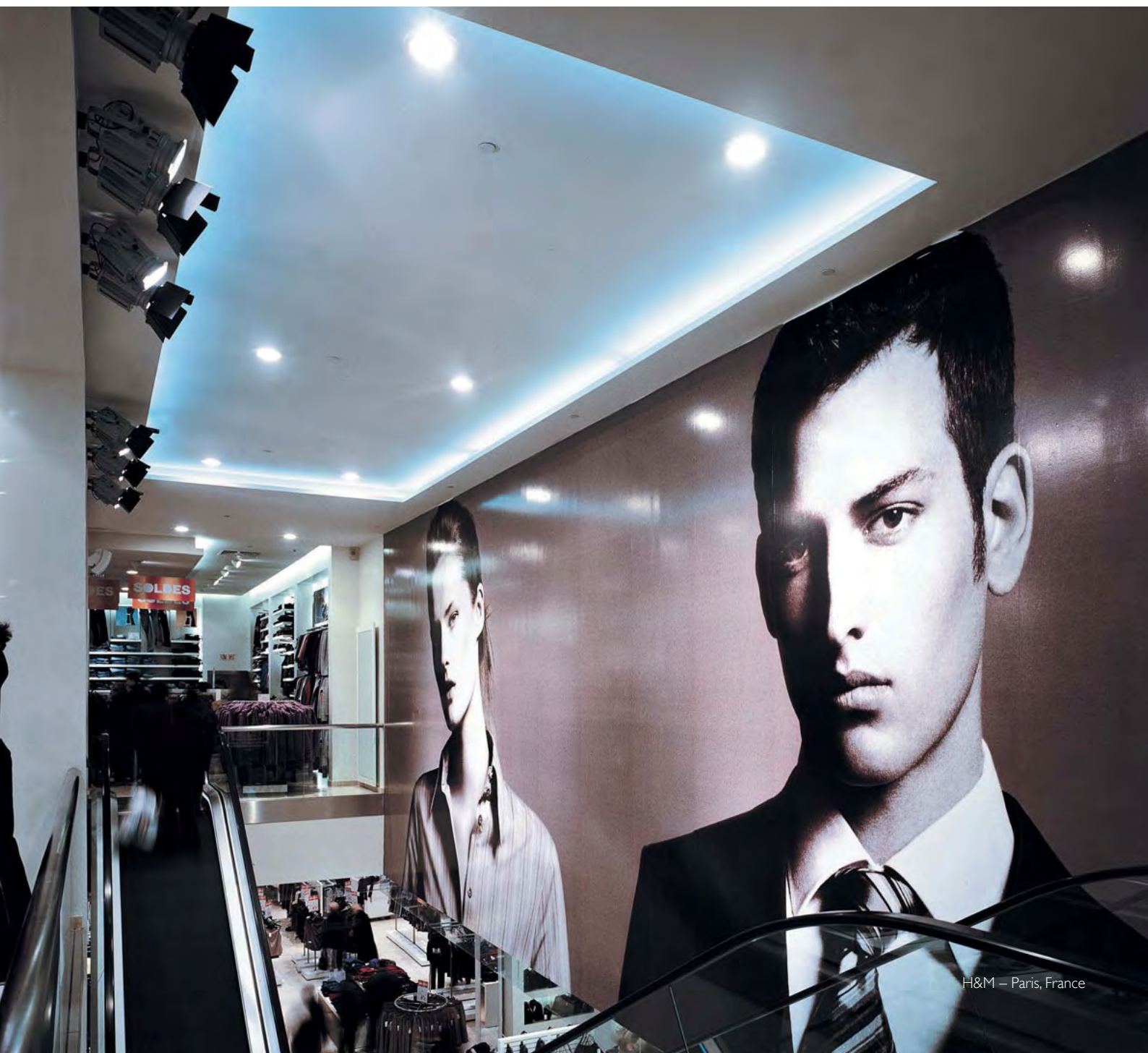
Delivering a warm, halogen-like accent beam, MASTER LEDspot AR111 is an ideal retrofit solution for spot and general lighting applications in the hospitality and retail industry. It is particularly suitable for general lighting where the light is on all the time, such as creative accent lighting applications in shops, restaurants, hotels, and especially for galleries, exhibitions and museums.

The robustly designed MASTER LEDspot AR111 offers various beam angles for a clearly defined beam spread. There is no UV or IR in the beam, making it suitable for illuminating heat-sensitive objects (food, organic materials, paintings, etc.). The patented intelligent driver enables broad compatibility with existing electromagnetic and electronic halogen transformers. MASTER LEDspot AR111 delivers huge energy savings and minimises maintenance cost without any reduction in brightness.

www.philips.co.uk/lighting

MASTER LEDspot LV AR111 G53

Type	MASTER LEDspotLV 15-75W 2700K AR111 24D MASTER LEDspotLV 15-75W 2700K AR111 40D MASTER LEDspotLV 15-75W 3000K AR111 24D MASTER LEDspotLV 15-75W 3000K AR111 40D
Wattage	15 W (75 W halogen replacement)
Light colour	Warm white 2700 & 3000 K
Colour Rendering Index	>80Ra
Beam angle	24D 40D
Lumen output	830 lm (2700 K) 725 & 745 lm (3000 K)
Average lifetime	45.000 hrs
Dimmable	No





MASTER LEDspot PAR38 outdoor – the energy-saving alternative for lighting in public areas

With its robust design and warm-white beam of light, the new-generation PAR lamps are ideal for general lighting and spot lighting in the hospitality industry. They are especially suitable for outdoor public areas such as entrances, walking paths and parking lots, where the light is always on.

The new outdoor version of the PAR 38 lamp can be used in up to IP65 rated luminaire and is one of the few energy-saving alternatives to incandescent PAR38 outdoor lamps available today.

www.philips.co.uk/lighting

MASTER LEDspot PAR38 Outdoor 17-100W

Type	MASTER LEDspot PAR38 OD 17-100W 2700K
Wattage	17 W (100 W halogen/GLS replacement)
Light colour	Warm white (2700 K)
Colour Rendering Index	>80Ra
Beam angle	25D
Lumen output	810 lm
Average lifetime	25.000 hrs
Dimmable	No



ColorFuse & iW Fuse Powercore – ultra-compact LED grazing fixture

With narrow beams of high-quality light, ColorFuse Powercore and iW Fuse Powercore are an excellent choice for a full range of surface grazing, wall-washing, and accent lighting applications. Its ultra-compact form factor permits installation in tight spaces too small to accommodate conventional grazing fixtures that offer similar level and distribution of light.

ColorFuse Powercore combines professional-grade colour mixing and maximised output with the efficiency and cost-effectiveness provided by Powercore technology.

iW Fuse Powercore offers a colour temperature range of warm 2700 K to cool 6500 K with three channels of warm, neutral, and cool LED sources.

Integrated Powercore technology ensures rapid, efficient and accurate control of power output to the fixture directly from line voltage, eliminating the need for external power supplies. Use of standard wiring dramatically simplifies installation and helps lower total system cost.

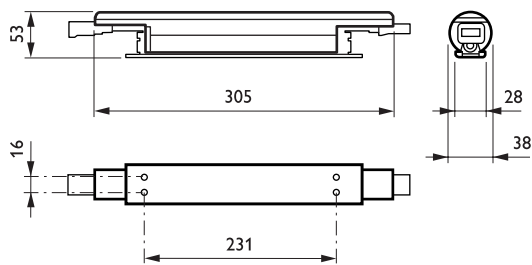
www.philips.co.uk/lighting

ColorFuse Powercore

Type	LS517X
Light source	Integral LED-module
Power	12.5 W
Beam angle	10° x 60° or 30° x 60°
Luminous flux	384 (10° x 60° beam angle) / 380 (30° x 60° beam angle)
Luminaire efficacy	> 22 lm/W (all channels on)
Maintenance of lumen output - L70	50,000 hours at 25°C 37,000 hours at 50°C
Operating temperature range	-20 to +50°C
Mains voltage	100 - 240V AC / 50-60 Hz
Dimming	Digital control 0 to 100%
Controls system	Via optional Data Enabler Pro and Philips or 3rd party DMX or Ethernet controller

iW Fuse Powercore

Type	LS516X
Light source	Integral LED-module
Power	12.5 W
Beam angle	10° x 60° or 30° x 60°
Luminous flux	613 (10° x 60° beam angle) / 636 (30° x 60° beam angle)
Luminaire efficacy	38.3 lm/W (all channels on)
Maintenance of lumen output - L70	50,000 hours L70 at 25° C 50,000 hours L70 at 50° C
Correlated Colour Temperature	2700 - 6500 K (dynamic)
Colour Rendering Index	81 (all channels on)
Operating temperature range	-20 to +50°C
Mains voltage	100 - 240V AC / 50-60 Hz
Controls system	Via optional Data Enabler Pro and Philips or 3rd party DMX or Ethernet controller



LS516X/LS517X

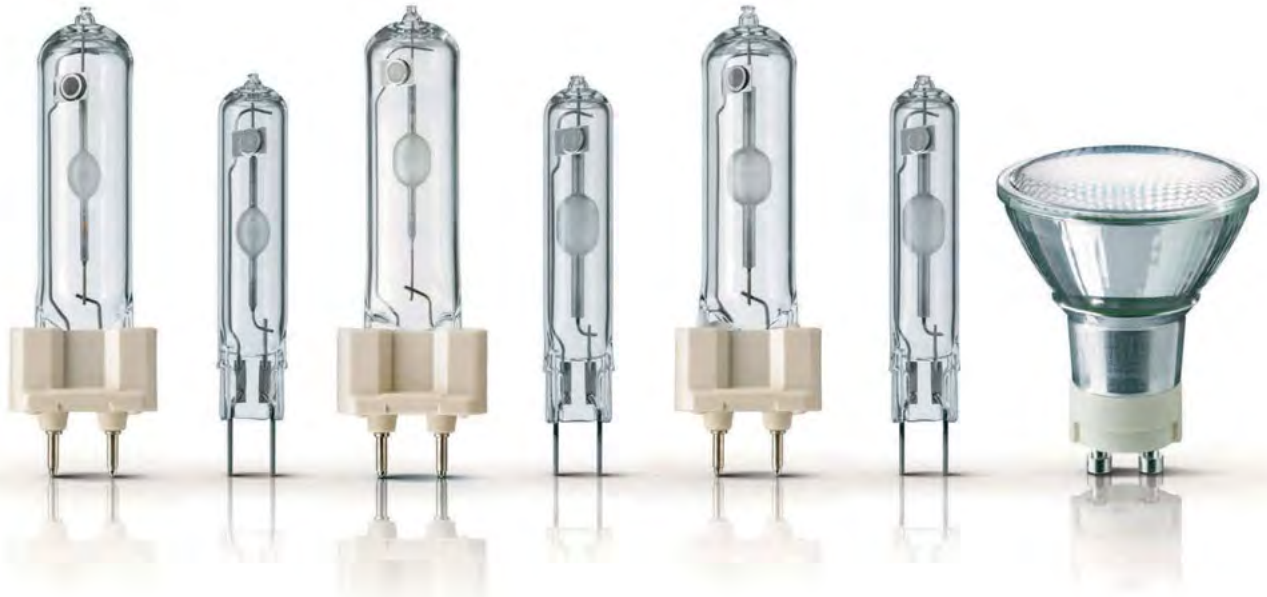


SNOG

Pure Frozen Yogurt

Retail





MASTERColour CDM Elite – our latest innovations for quality retail lighting

Since the introduction of our MASTERColour CDM Elite solution in 2007, Elite has set the standard in fashion retail lighting, delivering excellent quality of light together with lowest total cost of ownership. We are expanding the MASTERColour CDM range with exciting innovations!

MASTERColour CDM-T/TC Fresh - making fresh food look incredibly attractive

For years, MASTER SDW-T/TG has been leading the way in fresh-food accent lighting in supermarkets. Now, a new generation is offering a reduction in energy consumption of up to 50%! At the same time, the SDW colour enhancement has been further improved, making fresh food look completely irresistible!

MASTERColour CDM-T/TC Elite 4200K - cool sparkling white like you've never seen before

The unique properties of Elite are now available in cool light bringing the benefits of top-quality light to cool-light applications, such as car showrooms, jewellery and cosmetics stores.

MASTERColour CDM-Rm Elite Mini - the most powerful mini reflector lamp on the market

Our MASTERColour CDM-Rm Mini reflector lamp range is about to get even better with the introduction of our truly unique MASTERColour CDM-Rm Elite Mini 50W – great news for retailers looking for high lumen packages while keeping luminaires as small as possible.

www.philips.co.uk/lighting

MASTERCcolour CDM Elite

Type	CDM-T/TC Fresh 50W/70W	CDM-T/TC Elite 35W/70W / 942	CDM-Rm Elite Mini 50W / 930 25D / 40D / 60D
Light output	4000 / 6000 lm	3700 / 7500 lm	11500 / 7000 / 3000 cd
Luminous efficacy	80 / 82	95 / 103	72
Light colour	4000K	4200K	3000K
Colour Rendering Index	not relevant	90	90
Red Saturation Index	10/12	n.a.	n.a.
Green Saturation index	8	n.a.	n.a.
Lumen maintenance 12.000 hrs	82% / 79%	83%	75%
Operating position	50W: Horizontal 70W: Universal	Universal	Universal
Average lifetime	15000	15000	12000
Cap base	G12/G8.5	G12/G8.5	GX10
Wattage	50W / 70W	35W / 70W	50W



StoreFlux – powerful LED accent lighting that blends perfectly in the store architecture

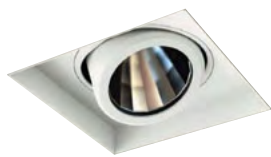
In today's highly competitive retail marketplace, store owners want high-impact accent lighting solutions that really make the merchandise catch the eye.

StoreFlux is a gridlight that can be equipped with up to four LED modules with a special reflector system to deliver top-quality light that makes your shop and goods on display look great. The combination of multiple LED sources with high lumen packages in one luminaire creates attractive sparkling light effects. StoreFlux offers low maintenance compared with CDM solutions and high efficiency compared to halogen solutions. Available with a refined rim design and in a rimless version, StoreFlux blends in discreetly with the store architecture.

www.philips.co.uk/lighting

StoreFlux

Type	GD501B (rim, 1 head version) GD502B (rim, 2 head version) GD503B (rim, 3 head version) GD504B (rim, 4 head in a row version) GD505B (rim, 4 head in a square version)	GD511B (rimless, 1 head version) GD512B (rimless, 2 head version) GD513B (rimless, 3 head version) GD514B (rimless, 4 head in a row version) GD515B (rimless, 4 head in a square version)
Light source	Replaceable LED module	
Power (+/-10%)	SLED800: 15 W SLED1200: 24 W SLED1700: 40 W	
Beam angle	26° (not for SLED1700), 30°, 40°	
Luminous flux	SLED800: 630 lm (3000 K) or 680 lm (4000 K) SLED1200: 1050 lm (3000 K) or 1150 lm (4000 K) SLED1700: 1700 lm (3000 K) or 2000 lm (4000 K)	
Correlated Colour Temperature	2700 K, 3000 K or 4000 K	
Colour Rendering Index	>80	
Maintenance of lumen output - L70	50,000 hours at 25°C	
Operating temperature range	+10 < T _a < 40°C	
Driver	Separate	
Material Housing	aluminium, steel Front glass: acrylic Installation frame for rimless version: galvanized steel	
Colour	White (WH), grey (GR) or black (BK) Other RAL colours available on request Housing, heads and rim can have different colour combinations	



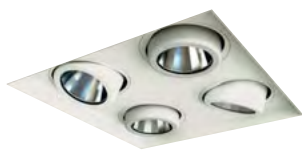
StoreFlux GD511B



StoreFlux GB502B



StoreFlux GB503B



StoreFlux GB515B



Maxos LED Recessed – always spot on

Maxos LED Recessed is a semi-modular recessed LED luminaire for shelf and gondola lighting. Thanks to its adjustable optic, the light can be aimed precisely at the products on the shelves or at signage. The dedicated beam shape results in maximum visibility of the merchandise on display and less spill light. The individual LEDs are shielded by anti-glare optics, thus ensuring visual comfort and creating an innovative 'light line' appearance.

The luminaire's astonishing system efficiency, combined with its maintenance-free operation and absence of hazardous materials, make it a truly green product.

Maxos LED Recessed fits any shop floor layout. No additional ceiling profile is required: the ceiling tile can be laid directly on the flat luminaire rim, reducing installation time and material usage.

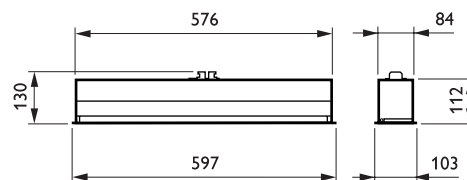
www.philips.co.uk/lighting

Maxos LED Recessed

Type	RC300B (single- and double beam versions)
Ceiling type	Exposed- and symmetrical concealed T-bar ceiling and plaster (board) ceiling Bandraster ceiling
Light source	Non-replaceable LED module
Power	16.3 W (single beam) 26 W (double beam)
Beam angle	Tilttable in steps of 5° (max 40°) 1x20° beam for single beam versions, tilttable in steps of 5° (max 40°)
Luminous flux	1290 lm (4000 K) 2 x 1120 lm (4000 K)
Correlated Colour Temperature	4000 K
Colour Rendering Index	> 80
Maintenance of lumen output - L70	50,000 hours at 25°C
Operating temperature range	10°C < T _a < 40°C
Driver	Built-in
Material	Housing: steel, powder coated Optic: aluminium Optical cover: PMMA
Colour	Housing: white (RAL 9016)
Installation	Through-wiring possible (loop-through Wieland connector)
Also available	Pelmet version: 20° beam, fixed at 65° tilt



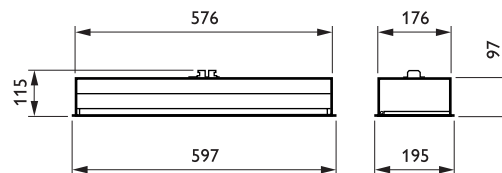
Maxos LED Recessed
single beam



RC300B single beam



Maxos LED Recessed
double beam



RC300B double beam



Office





Current office lighting families equipped with LED technology – for inspiring light effects

When it comes to LED solutions, customers want not only sustainability but something that delivers a truly inspiring lighting experience.

By making innovative use of LED technology, we have been able to create several inspiring LED-based lighting solutions, with appealing and dimmable white light, that have been fitted in many of our office-lighting product families. In this way, architects and lighting designers can easily match the lighting to their designs – whether these call for the subtle effect of sparkling arches, or the more expressive effect of bright fine lines.

All these LED solutions deliver high-quality functional lighting that is up to 35% more energy-efficient than that of their traditional fluorescent counterparts. When combined with external or built in controls (Philips ActiLume) the energy saving is further increased.

www.philips.co.uk/lighting

	Celino LED	Arano LED	SmartForm LED
Type	BCS, BPS 680	BCS, BPS 640	BCS, BPS 460
Mounting	Surface mounted	Surface mounted	Surface mounted
	Suspended	Suspended	Suspended
Light source	Non-replaceable LED module	Non-replaceable LED module	Non-replaceable LED module
Power	28W (LED24)	28W (LED24)	28W (LED24)
	55W (LED48)	54W (LED48)	54W (LED48)
Luminous flux	1650 – 4060 lm	1700 – 4260 lm	1650 – 4300 lm
	Depending on configuration	Depending on configuration	Depending on configuration
Efficiency	59 – 73 lm/W	61 – 79 lm/W	59 – 80 lm/W
Correlated Colour Temperature	4000K	4000K	4000K
	3000K (will follow)	3000K (will follow)	3000K (will follow)
Maintenance of lumen output	L90: 30,000 hr at 25 °C	L90: 30,000 hr at 25 °C	L90: 30,000 hr at 25 °C
	L70: 50,000 hr at 25 °C	L70: 50,000 hr at 25 °C	L70: 50,000 hr at 25 °C
Operating temperature range	+10 < T _a < 40°C	+10 < T _a < 40°C	+10 < T _a < 40°C
Driver	Built-in	Built-in	Built-in
	DALI dimmable	DALI dimmable	DALI dimmable
Controls	ActiLume can be integrated	ActiLume can be integrated	ActiLume can be integrated
Light effect	Sparkling arches (MLO)	Sparkling arches (MLO)	Sparkling arches (MLO)
	Bright fine lines (LIN)	Bright fine lines (LIN)	Bright fine lines (LIN)
Material housing	Natural anodised aluminium with die-cast aluminium end-caps	Natural anodised aluminium	Zinc-coated steel, painted white or silver grey



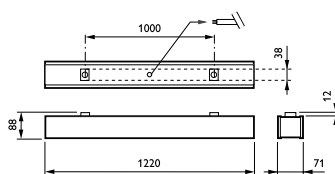
Celino LED



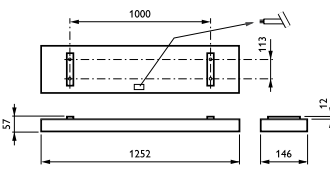
Arano LED



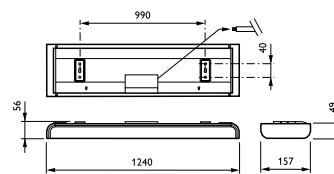
SmartForm LED



BCS680



BCS640



BCS460



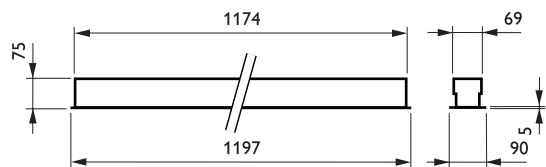
SmartForm LED – adding sustainability and light effects to an existing range

Reflecting Philips' drive for simple, sustainable solutions, SmartForm recessed is now available with LED technology inside. Designed to fit in a wide range of ceiling types, this family of highly versatile modular and semi-modular luminaires can fulfill the majority of project requirements in most applications.

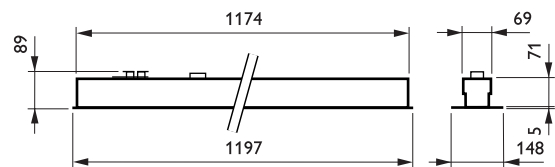
SmartForm LED offers higher luminaire efficiency than conventional MLO (micro-lens optic) solutions, enabling significant energy savings. At the same time, its choice of optics ensures a range of inspiring light effects to bring office environments to life.

www.philips.co.uk/lighting

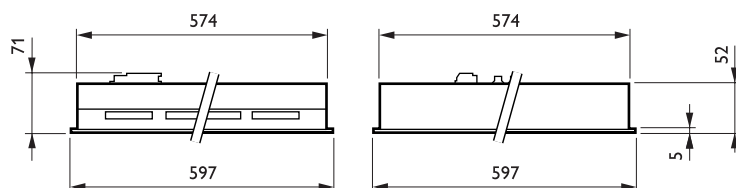
Smartform LED modular	Semi - Modular	Modular
Type	BBS411 (light beam slim, 600 mm module version) BBS412 (light beam slim, 625 mm module version) BBS415 (light beam, 600 mm module version) BBS416 (light beam, 625 mm module version) BBS417 (continuous light-line versions)	BBS460 (light beam, 600 module version) BBS462 (light beam, 625 module version) BBS464 (light effect, 600 module version) BBS465 (light effect, 625 module version)
Ceiling type	Exposed- and symmetrical concealed T-bar ceiling BBS417: only exposed T-bar ceiling	Exposed- and symmetrical concealed T-bar ceiling
Light source	Non-replaceable LED module	Non-replaceable LED module
Power	LED24: 27 W (4000 K) LED48: 52 W (4000 K)	LED24: 29 W (4000 K) LED48: 53 W (4000 K)
Beam angle	LIN-PC: 80° MLO-PC: 90°	PC-MLO: 80° AC-MLO: 90°
Luminous flux	LED24: 1700 / 1900 lm (4000 K) LED48: 3500 / 4100 lm (4000 K)	LED24: 1800 / 1900 lm (4000 K) LED48: 3700 lm (4000 K)
Correlated Colour Temperature	3000 K (available before end of year) or 4000 K	3000 K (available before end of year) or 4000 K
Colour Rendering Index	80	80
Maintenance of lumen output - L70	50,000 hours at 25°C	50,000 hours at 25°C
Operating temperature range	+10 < T _a < 40°C	+10 < T _a < 40°C
Driver	Built-in	Built-in
Dimming	Compatible with DALI controllers	Compatible with DALI controllers
Options	Emergency lighting (integrated): 3 hour (EL3) Airhandling Choice of optics: - Sparkling arches (MLO) - Bright fine lines (LIN) - Smooth light surface (O) (only BBS417)	Emergency lighting (integrated): 3 hour (EL3) Lighting controls: Actilume (ACL) Airhandling Choice of optics: - Sparkling arches (MLO) - Bright fine lines (LIN)
Material	Housing: zinc-coated steel Rim: zinc-coated steel, post lacquered Optical cover: AC-MLO: PMMA PC-MLO: polycarbonate	Housing: zinc-coated steel Rim: zinc-coated steel, post lacquered Optical cover: AC-MLO: PMMA PC-MLO: polycarbonate
Colour	White (WH), silver grey (SI) Other RAL colours available on request	White (WH), silver grey (SI) Other RAL colours available on request



BBS411



BBS415



BBS464



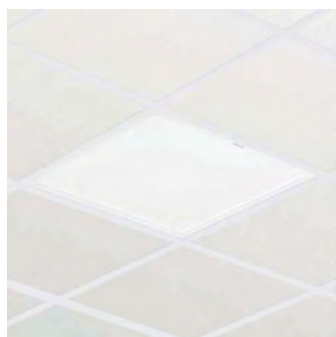
CoreView panel – simply sustainable

Across a whole range of applications – offices, shops and hospitality venues, for example – owners and operators need lighting that is both durable and energy-efficient in order to be able to control their operating costs. At the same time, however, budgetary constraints often prevent them from utilising the best technology available to deliver the high-quality general lighting they require. Now, all that is changing...

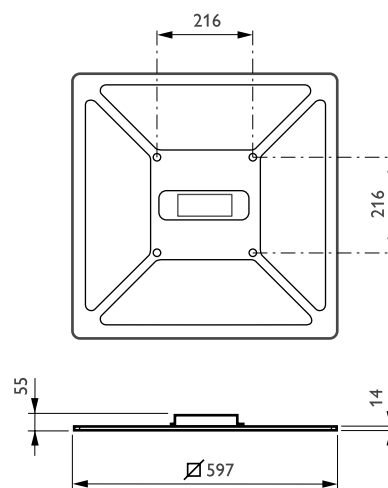
Suitable for recessed (lay-in only) and suspended mounting, the attractively shaped CoreView panel LED luminaire range delivers an attractive, uniform surface of light. It also lasts longer than fluorescent systems, consumes less energy and is very much an affordable proposition – in short, an excellent deal for those wanting to cut their operating expenses while retaining quality of light.

www.philips.co.uk/lighting

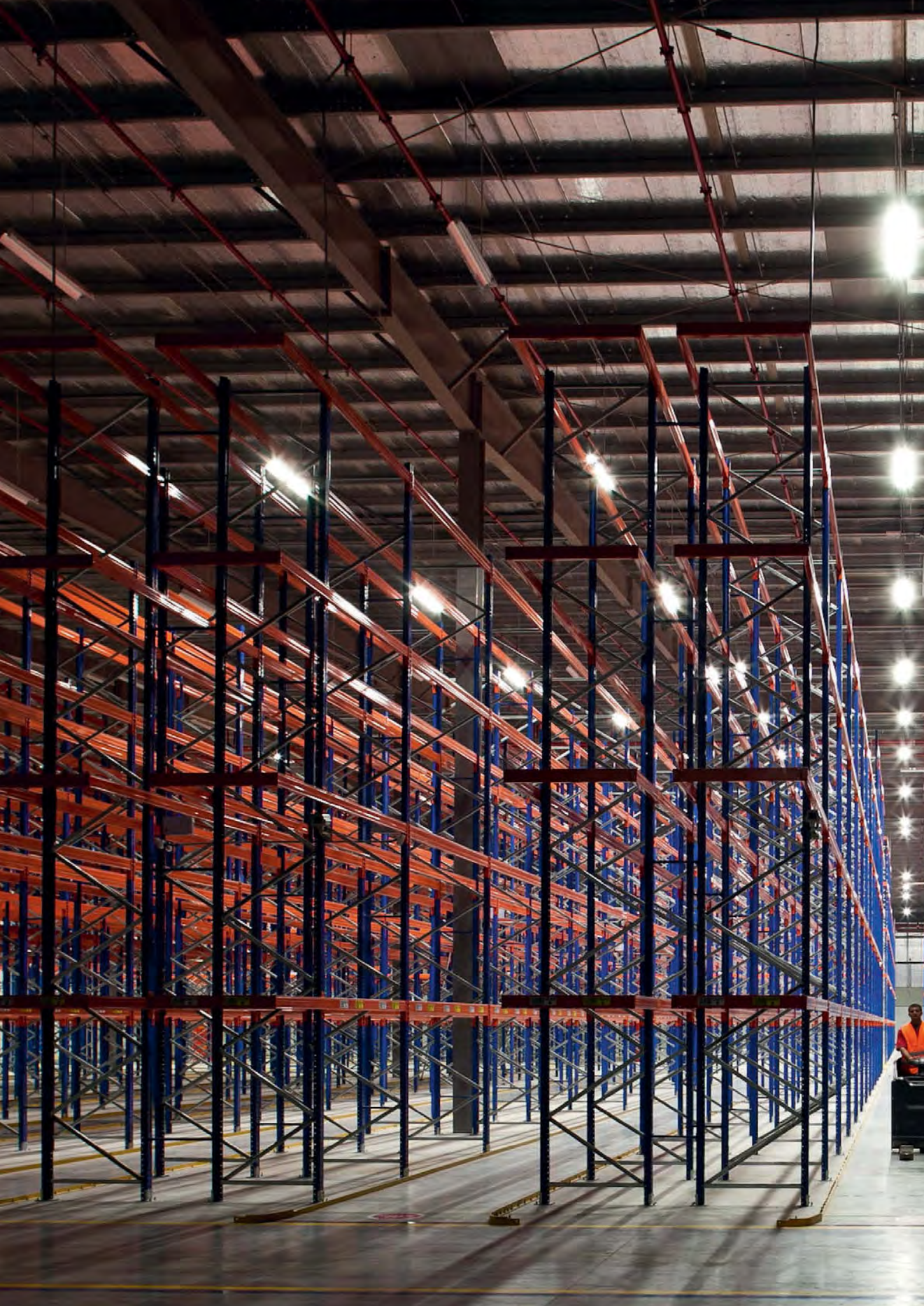
CoreView panel	
Type	RC160V
Ceiling type	Exposed T-bar ceiling
Light source	Non-replaceable LED module
Power	50-52 W, depending on execution
Beam angle	110°
Luminous flux	2900-3400 lm, depending on execution
Correlated Colour Temperature	3000 or 4000 K
Colour Rendering Index	> 80
Maintenance of lumen output - L70	30,000 hours at 25°C
Operating temperature range	+10 < T _a < 40°C
Driver	Built-in
Dimming	No
Material	Housing: steel Rim and diffuser: plastic Cover: PMMA
Colour	White



CoreView panel



RC160V



Industry





GentleSpace – taking high-bay lighting to the next level

Customers in industrial and warehousing applications are constantly looking for ways to reduce the amount of energy required to light their facilities. GentleSpace is the first LED high-bay luminaire that can directly replace HID high-bays of up to 400 W, enabling significant energy savings. LEDs also provide instant light and the possibility to dim the light level. And GentleSpace is DALI-dimmable, so even more energy can be saved.

The luminaire comes in two sizes and offers a choice of dedicated high quality optics, which fill the space with a gentle, comfortable light. All versions include steady Gripple Y-fit hangers that can carry up to 45 kg for easy and secure installation. GentleSpace is also equipped with a high-quality, thermally toughened, extra-white glass cover for high translucence. Its flat design saves space at the top of the building, leaving room for e.g. sprinkler installations

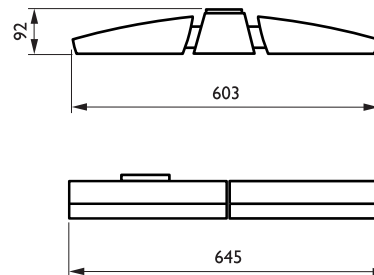
www.philips.co.uk/lighting

GentleSpace

Type	BY460P (2-pod version) BY461P (4-pod version)
Light source	Integral LED-module
Power	108, 145, 218 and 292 W
Luminous flux	10,000, 12,000, 20,000 and 24,000 lm
Luminaire efficacy	82 lm/W (Wide- and medium beam version) 91 lm/W (High Rack Optic version)
Correlated Colour Temperature	4000 K
Colour Rendering Index	> 75
Maintenance of lumen output L70	75,000 hours at 25°C
Operating temperature range	-30 to +45°C
Driver	Built-in (self ballasted LED-module)
Dimming	Dimmable to 10% of the maximum light output
Options	Integrated movement detection sensor
Material	Housing: die-cast aluminium Cover: thermally toughened clear glass
Colour	Silver grey, RAL 9006 (SI) Other RAL colours available on request
Optic	Medium beam (MB) Wide beam (WB) High-rack (HRO)
Connection	5-pole Waterproof external connector (3 + 2 DALI)



GentleSpace BY460P
(2-pod version)



GentleSpace BY461P (4-pod version)



For more information

Philips Lighting
Philips Centre
Guildford Business Park
Guildford
GU2 8XH

Tel: 0845 601 1283

Email: lighting.uk@philips.com
www.philips.co.uk/lighting

Data subject to change
Printer: Print Competence Company - 11.2011

This booklet is printed on Magno Satin 135 gsm (inside) and Magno Satin 300 gsm (cover) manufactured at Sappi Fine Paper Mills, which are ISO 9001:2000 and ISO 14001-certified and EMAS-registered. The pulp used for Magno is bleached chlorine-free. The timber the pulp is made from is sourced from sustainably managed forests. Sappi Fine Paper Europe (SFPE) has a group Chain of Custody Certification for its entire European operations under both the Forest Stewardship Council (FSC) and the Programme for the Endorsement of Forest Certification Systems (PEFC) schemes.

©2011 Koninklijke Philips Electronics N.V.

All rights reserved. Reproduction in whole or in part is prohibited without the prior written consent of the copyright owner. The information presented in this document does not form part of any quotation or contract, is believed to be accurate and reliable and may be changed without notice. No liability will be accepted by the publisher for any consequence of its use. Publication thereof does not convey nor imply any license under patent- or other industrial or intellectual property rights.



Document order number: 3222 635 66613

11/2011

Data subject to change

www.philips.co.uk/lighting